

WALK-BEHIND TRENCHERS



Архангельск (8182)63-90-72
Астана +7(7172)727-132
Белгород (4722)40-23-64
Брянск (4832)59-03-52
Владивосток (423)249-28-31
Волгоград (844)278-03-48
Вологда (8172)26-41-59
Воронеж (473)204-51-73
Екатеринбург (343)384-55-89
Иваново (4932)77-34-06
Ижевск (3412)26-03-58
Казань (843)206-01-48

Калининград (4012)72-03-81
Калуга (4842)92-23-67
Кемерово (3842)65-04-62
Киров (8332)68-02-04
Краснодар (861)203-40-90
Красноярск (391)204-63-61
Курск (4712)77-13-04
Липецк (4742)52-20-81
Магнитогорск (3519)55-03-13
Москва (495)268-04-70
Мурманск (8152)59-64-93
Набережные Челны (8552)20-53-41

Нижний Новгород (831)429-08-12
Новокузнецк (3843)20-46-81
Новосибирск (383)227-86-73
Орел (4862)44-53-42
Оренбург (3532)37-68-04
Пенза (8412)22-31-16
Пермь (342)205-81-47
Ростов-на-Дону (863)308-18-15
Рязань (4912)46-61-64
Самара (846)206-03-16
Санкт-Петербург (812)309-46-40
Саратов (845)249-38-78

Смоленск (4812)29-41-54
Сочи (862)225-72-31
Ставрополь (8652)20-65-13
Тверь (4822)63-31-35
Томск (3822)98-41-53
Тула (4872)74-02-29
Тюмень (3452)66-21-18
Ульяновск (8422)24-23-59
Уфа (347)229-48-12
Челябинск (351)202-03-61
Череповец (8202)49-02-64
Ярославль (4852)69-52-93

сайт: <http://www.ditch.nt-rt.ru/> || эл. почта: dhc@nt-rt.ru

1

Utilizes the Ditch Witch 35K digging system or the new exclusive 19K Opticut™ System.

2

C24X features a low-maintenance, long lasting Honda® engine. C16X and C30X offers a reliable Briggs & Stratton engine.

7

Newly designed hydraulic system is simple and reliable, with no linkages to adjust.

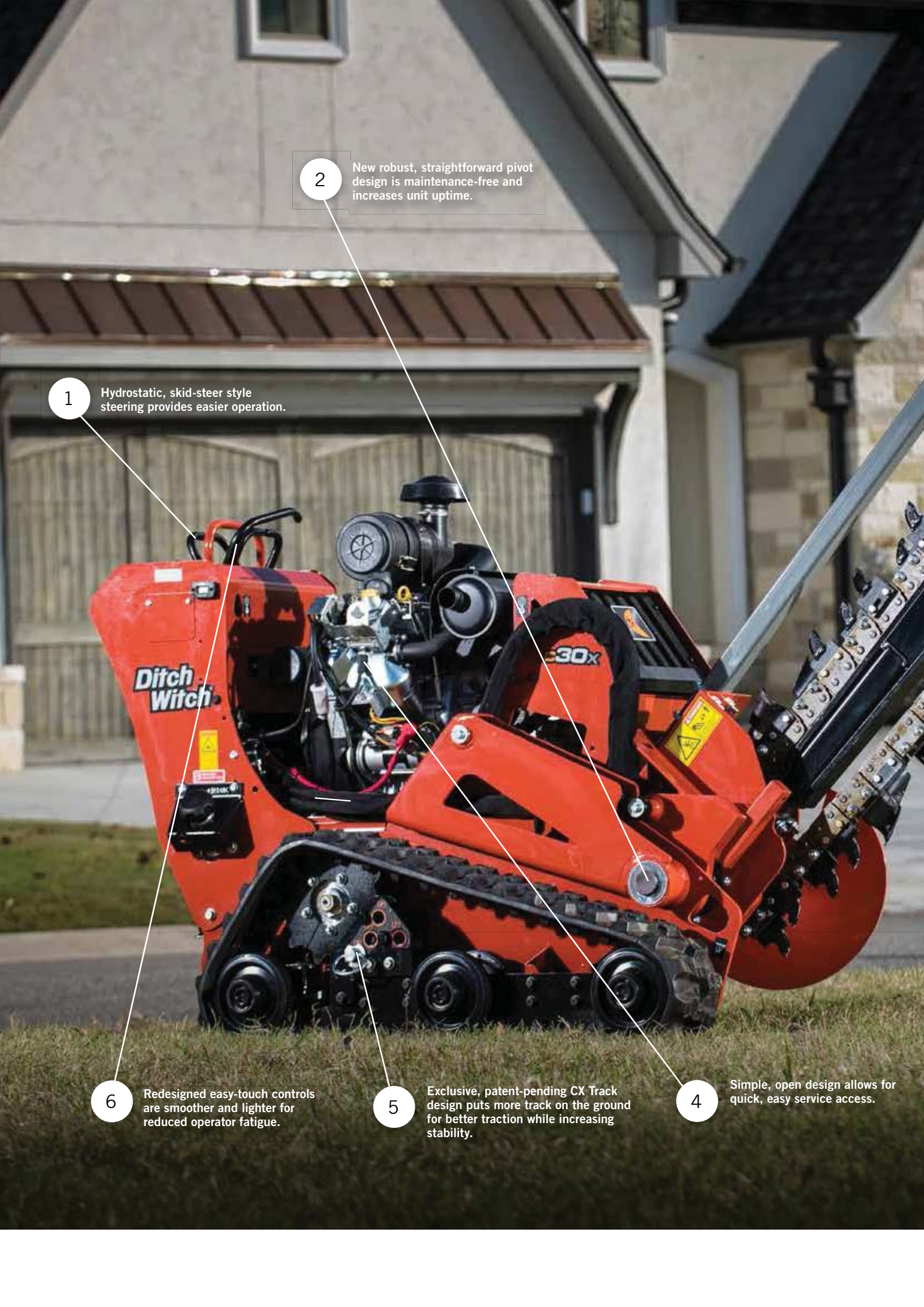
6

Greaseless sealed bearing design with construction-grade seals help increase machine longevity.

5

Standard outboard bearing support stabilizes the headshaft and auger, for reliable productivity trench after trench.





1

Hydrostatic, skid-steer style steering provides easier operation.

2

New robust, straightforward pivot design is maintenance-free and increases unit uptime.

6

Redesigned easy-touch controls are smoother and lighter for reduced operator fatigue.

5

Exclusive, patent-pending CX Track design puts more track on the ground for better traction while increasing stability.

4

Simple, open design allows for quick, easy service access.

CX SERIES WALK-BEHIND TRENCHERS SPECIFICATIONS

DIMENSIONS*

	C16X	C24X
Headshaft height	13.7 in (348 mm)	13.7 in (348 mm)
Length (up to)	94 in (2.4 m)	94 in (2.4 m)
Width, transport	35.8 in (909 mm)	35.8 in (909 mm)
Height, transport (up to)	63 in (1.6 m)	63 in (1.6 m)
Centerline trench to outside edge machine		
Left	17.2 in (437 mm)	17.2 in (437 mm)
Right	18.6 in (472 mm)	18.6 in (472 mm)

POWER

Engine	Briggs & Stratton® Vanguard™ 16*	Honda® GX690**
Fuel	Gasoline	Gasoline
Cooling medium	Air	Air
Number of cylinders	2	2
Manufacturer's net horsepower rating*	16 hp (11.9 kW)	22 hp (16.5 kW)
Rated speed	3,600 rpm**	3,600 rpm*
Fuel consumption @ rated power	1.33 gph (5 LPH)	1.77 gph (6.7 LPH)

POWER TRAIN

Ground drive transmission: hydraulic, Infinite variable from zero to maximum, speed and direction control		
Digging chain drive: hydraulic direct drive, one speed forward and reverse		
Pump drive: direct drive from engine		
Track width	8 in (200 mm)	8 in (200 mm)
Trencher drive		
Hydraulic	Direct drive	Direct drive
Digging chain	19K, 33K and 35K	19K, 33K and 35K
Ground pressure	4.5 psi	4.5 psi

OPERATION

Vehicle speeds, max		
Transit forward	120 fpm (36.6 m/min)	176 fpm (53.6 m/min)
Transit reverse	120 fpm (36.6 m/min)	136 fpm (41.5 m/min)
Digging chain speed @ 3,600 rpm		
19K	366 fpm (111.56 m/min)	366 fpm (111.56 m/min)
33/35K	309 fpm (94.2 m/min)	309 fpm (94.2 m/min)
Spoil handling		
Auger, type	Single, open end	Single, open end
Auger, diameter	17 in (432 mm)	17 in (432 mm)
Trench cleaner type	Mechanical	Mechanical
Trench cleaner size	4-6 in (102-152 mm)	4-6 in (102-152 mm)
Operating weight (up to)	1,895 lb (860 kg)	1,915 lb (869 kg)

HYDRAULIC SYSTEM @ 3,600 RPM

Digging drive pump capacity	10 gpm (37.85 l/min)	10 gpm (37.85 l/min)
Filtration	10 micron absolute	10 micron absolute

FLUID CAPACITIES

Fuel tank	2.3 gal (6.5 L)	6.2 gal (23.5 L)
Engine oil	1.5 qt (1.46 L)	1.8 qt (1.7 L)
Hydraulic system	11 gal (42 L)	11 gal (42 L)

TRENCH SIZE, MAX

Depth	36 in (914 mm)	36 in (914 mm)
Width	6 in (152 mm)	6 in (152 mm)

NOISE LEVEL

Ear sound pressure	87 dBA ISO 6394	91 dBA per ISO 6394
Overall sound pressure	97 dBA per ISO 6393	100 dBA per ISO 6393

VIBRATION LEVEL

	Operators hand less than 2.5 m/s ²	Operators hand less than 2.5 m/s ²
--	---	---

* SAE J1940 Gross or Net. ** SAE J1349 Net.

Specifications are general and subject to change without notice. If exact measurements are required, equipment should be weighed and measured. Due to selected options, delivered equipment may not necessarily match that shown.

C SERIES TRENCHERS



KEY FEATURES/BENEFITS

EXCLUSIVE, PATENT-PENDING OFFSET REAR TIRE DESIGN

delivers balanced traction, optimal weight distribution for increased production over competitive rubber tire units.

PATENT-PENDING PIVOTING TRAIL WHEEL allows easier turning, better maneuverability, and smoother operation on rough terrain or pavement.

NEW ROBUST, STRAIGHTFORWARD PIVOT DESIGN

is maintenance-free and increases unit uptime.

GREASELESS SEALED BEARING DESIGN

with construction grade seals help increase machine longevity.

NO DAILY GREASE POINTS—a Ditch Witch® exclusive—means less hassle and prep to keep your trenchers rental-ready.

RESPONSIVE, EASY-TO-USE CONTROLS provide smoother operation.

INTRODUCING THE **C SERIES** WALK-BEHINDS

C12, C14, C16





RT30 TRENCHER SPECIFICATIONS

	U.S.	METRIC
DIMENSIONS*		
Height	84 in	2159 mm
Length, transport	138 in	3526 mm
Width, transport	48 in	1219 mm
Angle of approach	20°	
Angle of departure	22°	
Ground clearance	12.1 in	307 mm
Trench depth, max	42 in	1067 mm
Trench width, min to max	4-8 in	109-203 mm
POWER		
Engine	Kubota® D1105	
Fuel	Diesel	
Number of cylinders	3	
Displacement	68.6 in ³	1.2 L
Bore	3.07 in	78 mm
Stroke	3.09 in	78.5 mm
Manufacturer's gross power rating	24.8 hp	17.9 kW
Rated speed	3,000 rpm	
Emissions compliance	EPA Tier 4	
OPERATION		
Forward speed, max	5.3 mph	8.5 km/h
Reverse speed, max	2.7 mph	4.3 km/h
Vehicle turning circle (SAE)	216.6 in	6.7 m
Operating weight	3,050 lb	1384 kg

	U.S.	METRIC
HYDRAULIC SYSTEM @ 3,000 RPM		
Ground drive pump capacity	18.7 gpm	70.8 l/min
Attachment pump capacity	18.7 gpm	70.8 l/min
FLUID CAPACITIES		
Fuel tank	5.5 gal	20.8 L
NOISE LEVEL		
Operator	90 dBA sound pressure per ISO 6394	
Exterior	104 dBA sound power per ISO 6393	
BACKFILL BLADE		
Blade width	48 in	1219 mm
Swing angle, max (left/right)	30°	
TIRES		
Front	Standard 18 x 9.50-8, 2-ply bar lug	
Rear	Standard 26 x 12.00-12, 4-ply bar lug	
BATTERY		
SAE cold crank rating @ 0°F (-18°C)	650 amps	

Specifications are general and subject to change without notice. If exact measurements are required, equipment should be weighed and measured. Due to selected options, delivered equipment may not necessarily match that shown.

*Dimensions are based on H210 attachment and 36-in boom with 6-in wide chain and 175-lb operator



C SERIES WALK-BEHIND TRENCHERS SPECIFICATIONS

DIMENSIONS*	C16	C14	C12
Headshaft height	13 in (330 mm)	13 in (330 mm)	13 in (330 mm)
Length, transport	92 in (2 m)	84 in (2 m)	84 in (2 m)
Width, transport	31.5 in (800 mm)	31.5 in (800 mm)	31.5 in (800 mm)
Height, transport	48 in (1.2 m)	48 in (1.2 m)	48 in (1.2 m)
Centerline trench to outside edge machine			
Left	14 in (356 mm)	14 in (356 mm)	14 in (356 mm)
Right	17.3 in (439 mm)	17.3 in (439 mm)	17.3 in (439 mm)
POWER			
Engine	Briggs & Stratton® Vanguard™ 16*	Briggs & Stratton® 2100 Series*	Honda® GX390**
Fuel	Gasoline	Gasoline	Gasoline
Cooling medium	Air	Air	Air
Number of cylinders	2	1	1
Manufacturer's net horsepower rating*	16 hp (11.9 kW)	13.5 hp (10 kW)	12 hp (8.7 kW)
Net torque @ 2,500 rpm	19.5 lb-ft (26.4 N-m)	25 lb-ft (33.9 N-m)	35.6 lb-ft (48.3 N-m)
Rated speed	3,600 rpm**	3,600 rpm*	3,600 rpm*
Fuel consumption @ rated power	1.33 gph (5 lph)	1.3 gph (4.9 lph)	0.92 gph (3.5 lph)
Starting	Electric	Rope Pull	Rope Pull
POWER TRAIN			
Ground drive transmission: hydraulic, Infinite variable from zero to maximum, speed and direction control			
Digging chain drive: hydraulic direct drive, one speed forward and reverse			
Pump drive: direct drive from engine			
Tire size	16 x 6.5-8	16 x 6.5-8	16 x 6.5-8
Trencher drive			
Hydraulic	Direct drive	Direct drive	Direct drive
Digging chain	19K/33K/35K	19K/33K/35K	19K/33K/35K
Ground pressure	4.5 psi	4.5 psi	5 psi
OPERATION			
Vehicle speeds w/track, max			
Transit forward	125 fpm (60 m/min)	149 fpm (60 m/min)	147 fpm (51 m/min)
Transit reverse	125 fpm (39.5 m/min)	111 fpm (39.5 m/min)	120 fpm (21 m/min)
Digging chain speed @ 3,600 rpm			
19K	366 fpm (118.5 m/min)	416 fpm (118.5 m/min)	416 (118.5 m/min)
33/35K	309 fpm (118.5 m/min)	351 fpm (118.5 m/min)	351 fpm (128 m/min)
Spoil handling			
Auger, type	Single, open end	Single, open end	Single, open end
Auger, size	17 in	17 in	17 in
Trench cleaner type	Mechanical	Mechanical	Mechanical
Trench cleaner size	4-6 in (102-152 mm)	4-6 in (102-152 mm)	4-6 in (100-152 mm)
Operating weight	1,528 lb (693 kg)	1,191 lb (540 kg)	1,195 lb (542 kg)
HYDRAULIC SYSTEM @ 3,600 RPM			
Digging drive pump capacity	10 gpm (45 l/min)	6 gpm (45 l/min)	6 gpm (45 l/min)
Ground drive dual hydrostat pump	11.4 gpm total (43 l/min)	11.4 gpm total (43 l/min)	11.4 gpm total (43 l/min)
Filtration	10 micron absolute	10 micron absolute	10 micron absolute
FLUID CAPACITIES			
Fuel tank	2.3 gal (6.5 L)	1.7 gal (6.5 L)	1.6 gal (13 L)
Engine oil	1.6 qt (1.1 l)	1.8 qt (1.7 L)	2.1 qt (2 L)
Hydraulic reservoir	7 gal (26 l)	7 gal (26 L)	7 gal (26 L)
Hydraulic system	8.5 gal (32 l)	8.5 gal (32 L)	8.5 gal (32 L)
TRENCH SIZE, MAX			
Depth	36 in (914 mm)	24 in (609 mm)	24 in (609mm)
Width	6 in (152 mm)	6 in (152 mm)	6 in (152 mm)
NOISE LEVEL			
Operator	87 dBA sound pressure per ISO 6394	91 dBA sound pressure per ISO 6394	92 dBA sound pressure per ISO 6394
Exterior	97 dBA sound power per ISO 6393	101 dBA sound power per ISO 6393	101 dBA sound power per ISO 6393
VIBRATION LEVEL			
	Vibration at the operator's hand during normal operation is less than 2.5 m/s².	Vibration at the operator's hand during normal operation is less than 2.5 m/s².	Vibration at the operator's hand during normal operation is less than 2.5 m/s².

* SAE J1940 Gross or Net. ** SAE J1349 Net.
Specifications are general and subject to change without notice. If exact measurements are required, equipment should be weighed and measured.
Due to selected options, delivered equipment may not necessarily match that shown.

RT30 TRENCHER

1

42-in (107-cm) boom provides 36-in (91-cm) cover depth.

2

Operator's station offers room to work comfortably and features easy-to-use, color-coded controls—features in great demand by rental customers.

8

Ditch Witch chain, teeth and sprockets are specially designed and manufactured to work together to provide exceptional reliability and productivity.

7

Advanced, maintenance-free pivot design is simplified and raised to keep above dirt and debris.

6

Tight turning radius, four-wheel drive and compact footprint make the RT30 incredibly maneuverable—and ideal for installations on tight, residential jobsites.





RT30 TRENCHER SPECIFICATIONS

	U.S.	METRIC
DIMENSIONS*		
Height	84 in	2159 mm
Length, transport	138 in	3526 mm
Width, transport	48 in	1219 mm
Angle of approach	20°	
Angle of departure	22°	
Ground clearance	12.1 in	307 mm
Trench depth, max	42 in	1067 mm
Trench width, min to max	4-8 in	109-203 mm
POWER		
Engine	Kubota® D1105	
Fuel	Diesel	
Number of cylinders	3	
Displacement	68.6 in³	1.2 L
Bore	3.07 in	78 mm
Stroke	3.09 in	78.5 mm
Manufacturer's gross power rating	24.8 hp	17.9 kW
Rated speed	3,000 rpm	
Emissions compliance	EPA Tier 4	
OPERATION		
Forward speed, max	5.3 mph	8.5 km/h
Reverse speed, max	2.7 mph	4.3 km/h
Vehicle turning circle (SAE)	216.6 in	6.7 m
Operating weight	3,050 lb	1384 kg

	U.S.	METRIC
HYDRAULIC SYSTEM @ 3,000 RPM		
Ground drive pump capacity	18.7 gpm	70.8 l/min
Attachment pump capacity	18.7 gpm	70.8 l/min
FLUID CAPACITIES		
Fuel tank	5.5 gal	20.8 L
NOISE LEVEL		
Operator	90 dBA sound pressure per ISO 6394	
Exterior	104 dBA sound power per ISO 6393	
BACKFILL BLADE		
Blade width	48 in	1219 mm
Swing angle, max (left/right)	30°	
TIRES		
Front	Standard 18 x 9.50-8, 2-ply bar lug	
Rear	Standard 26 x 12.00-12, 4-ply bar lug	
BATTERY		
SAE cold crank rating @ 0°F (-18°C)	650 amps	

Specifications are general and subject to change without notice. If exact measurements are required, equipment should be weighed and measured. Due to selected options, delivered equipment may not necessarily match that shown.

*Dimensions are based on H210 attachment and 36-in boom with 6-in wide chain and 175-lb operator

ZAHN® R300 POWER UTILITY



2

Soft-touch, color-coded, ergonomic controls are easy to grip, easy to learn and provide smooth, easy operation.

1

Ground speed of up to twice that of any walk-behind trencher and faster than any mini skid steer on the market.

12

Robust, 30-hp (22.4-kW) Kohler® engine maximizes front-end productivity.

11

High-flotation tires distribute weight evenly to minimize impact on lawns and other delicate turf; optional tracks increase stability and performance.

10

Traction-assist feature provides extra drawbar on demand, so you can push more, pull more and traverse soft ground with minimal tire slippage.

9

Compact size, so it can get in, out and around tight jobsites with ease.

8

Unique InterChange™ connection enables the front end to perform like a dedicated unit.

7

Convenient cargo tray for storing water bottle, work gloves, cell phone, or assorted tools.

ZAHN® TRENCHER SPECIFICATIONS CONTINUED

	4-WHEEL DRIVE		HEADSHAFT AUGER		INDEPENDENT AUGER	
HEADSHAFT SPEEDS @ 3,600 RPM ENGINE	U.S.	METRIC	U.S.	METRIC	U.S.	METRIC
Low speed/high torque	186 rpm		186 rpm		186 rpm	
Medium speed/medium torque	244 rpm		244 rpm		244 rpm	
High speed/low torque	282 rpm		282 rpm		282 rpm	
POWER TRAIN						
Digging chain drive	Hydraulic direct drive		Hydraulic direct drive		Hydraulic direct drive	
Digging chain	33,000 lb or 35,000 lb		33,000 lb or 35,000 lb		33,000 lb or 35,000 lb	
Spoils handling drive	Hydraulic, independent		Hydraulic, independent		Hydraulic, independent	
Chain drive sprocket	Forged and tempered		Forged and tempered		Forged and tempered	
OPERATION						
Digging chain speed						
Min	230 ft/min	70.1 m/min	290 ft/min	88.4 m/min	230 ft/min	70.1 m/min
Max	290 ft/min	88.4 m/min	364 ft/min	111 m/min	364 ft/min	111 m/min
Trench cleaner type, mechanical						
Min	4 in	102 mm	4 in	102 mm	4 in	102 mm
Max	12 in	305 mm	8 in	203 mm	8 in	203 mm
Spoils handling	Single open end auger		Single open end auger		Single open end auger	
Auger size	6.18-in OD x 2-in ID x 17.25-in long		18-in OD x 2-in ID x 8.7-in long		6.18-in OD x 2-in ID x 17.25-in long	
TIRES/PRESSURE						
Urethane-filled trail wheel	N/A	N/A	16 x 6.5-8, ply, bar lug		16 x 6.5-8, ply, bar lug	
Tire assembly mass	N/A	N/A	18 lb	8.16 kg	18 lb	8.16 kg

ZAHN R300 POWER UTILITY SPECIFICATIONS

	U.S.	METRIC
DIMENSIONS		
Mobile length	70 in	1.78 m
Wheelbase	34.2 in	869 mm
Tractor back to rear axle	26.8 in	681 mm
Rear axle to attachment mounting	19.2 in	488 mm
Attachment mounting to front axle	15 in	381 mm
Mobile height	53.5 in	1.36 m
Ground clearance	5.3 in	135 mm
Platform height	10.7 in	272 mm
Width	36 in	914 mm
Angle of departure	25°	
Weight w/tires	1,290 lb	585 kg
Weight w/tracks	1,629 lb	738 kg
Mass	1,290 lb	585 kg
Vehicle clearance circle (SAE) wall to wall		
Right turn, 18 x 9.5-8 tires	11.3 ft	3.44 m
Left turn, 18 x 9.5-8 tires	10.5 ft	3.2 m
Right turn, tracks	15.8 ft	4.80 m
Left turn, tracks	16.7 ft	5.08 m
OPERATION		
Ground drive speed, forward/reverse		
Low	3.5 mph	5.6 km/h
High	5 mph	8 km/h
HYDRAULIC SYSTEM		
Auxiliary: gear pump		
Flow rate	12 gpm	46 l/min
Pressure	3,000 psi	207 bar
Ground drive: hydrostat		
Flow rate	19.3 gpm	73 l/min
Pressure	3,500 psi	241 bar
Ground pressure		
18x9.5-8 tires	10 psi	.7 bar
20x10-8 tires	9 psi	.6 bar
Tracks, averaged	3.11 psi	.21 bar

	U.S.	METRIC
POWER		
Engine	Kohler® CH750S	
Fuel	Gasoline	
Cooling medium	Air	
Number of cylinders	2	
Displacement	45.6 in³	747 cm³
Bore	3.3 in	83 mm
Stroke	2.7 in	69 mm
Manufacturer's power rating	30 hp	22.4 kW
Rated speed	3,600 rpm	
POWER TRAIN		
Parking brake	Mechanical, hand operated	
Service brake	Ground drive speed/direction control brakes machine hydraulically when moved to neutral position	
FLUID CAPACITIES		
Fuel tank	9 gal	34.06 L
Engine oil, w/filter	2 qt	1.9 L
Hydraulic reservoir	7.7 gal	29.1 L
Total hydraulic system volume	8.5 gal	32.2 L
TIRES/PRESSURE		
18 x 9.5-8, 2 ply, bar lug	12 psi	82.7 kPa
Tire assembly mass	22 lb	9.98 kg
Urethane filled 18 x 9.5-8, 2 ply, bar lug	N/A	
Tire assembly mass	36 lb	16.33 kg
Urethane filled 20 x 10-8, ply, bar lug	N/A	
Tire assembly mass	49 lb	22.23 kg
18 x 8.5-8, 2 ply, turf	22 psi	151.7 kPa
Tire assembly mass	20 lb	9.07 kg
BATTERY		
SAE reserve capacity rating	32 min	
SAE cold crank rating @ 0°F (-18°C)	200 amps	

Specifications are general and subject to change without notice. If exact measurements are required, equipment should be weighed and measured. Due to selected options, delivered equipment may not necessarily match that shown.

410SX VIBRATORY PLOW



1

Optional front-mounted trencher attachment features an auger for fast spoils removal.

2

When attachment or ground drive is engaged, operator-presence system stops the engine when you release the control.

3

Operator's station features easily accessible, easy-to-understand, color-coded controls; one lever controls ground speed, direction and steering.

8

49.6-gross-hp (37-kW) Kubota® gas engine provides the power you need for the most demanding conditions.

7

Oscillating rear axle keeps four-wheel drive engaged, for excellent traction and drawbar.

410SX VIBRATORY PLOW SPECIFICATIONS

	U.S.	METRIC
DIMENSIONS		
Height, max	63.5 in	1.61 m
Length		
W/out plow and trencher	118 in	3 m
W/plow only	151 in	3.8 m
Width, max	56 in	1.42 m
Angle of approach	21°	
Angle of departure	17°	
Wheelbase	46 in	1.17 m
Plow cover depth	26 in	660 mm
Weight		
Basic unit w/18-in blade and 36-in chain	3,910 lb	1773 kg

OPERATION		
Ground drive speed, max		
Forward	2.9 mph	4.6 km/h
Reverse	1.5 mph	2.5 km/h
Material installation diameter, max		
Pull blade	3 in	75 mm

FLUID CAPACITIES		
Fuel tank	8.5 gal	32.2 L
Hydraulic reservoir	12.7 gal	48.1 L

BATTERY		
SAE cold crank rating @ 0°F (-18°C)	800 amps	

Specifications are general and subject to change without notice. If exact measurements are required, equipment should be weighed and measured. Due to selected options, delivered equipment may not necessarily match that shown.

	U.S.	METRIC
POWER		
Engine	Kubota® WG1605-G-E3	
Fuel	Unleaded gasoline	
Cooling medium	Liquid	
Aspiration	Natural	
Number of cylinders	4	
Displacement	93.79 in³	1.537 L
Bore	3.11 in	79 mm
Stroke	3.09 in	78.4 mm
Manufacturer's gross power rating (per SAE J1995)	49.6 hp	37 kW
Rated speed	3,600 rpm	
Emissions compliance	EPA LSI	
Drive type		
Ground	Hydrostatic	
Plow/trencher/auxiliary	Hydraulic gear pump	
Tires, max	26 x 12-12	

HYDRAULIC SYSTEM		
Ground drive		
Pressure	4,000 psi	276 bar
Flow rate	18 gpm	68 l/min
Attachment		
Pressure	3,000 psi	207 bar
Flow rate	20.3 gpm	77 l/min
Auxiliary		
Pressure	2,000 psi	138 bar
Flow rate	8.4 gpm	31.8 l/min

100SX VIBRATORY PLOW



1

All controls are color-coded and accessible from the operator's position for easy operation.

2

Minimal maintenance requirements and easy access to service points.

6

Hydrostatic ground drive provides greater traction, maneuverability and durability.

7

Versatile plow blade can bury pipe and cable with up to 12 inches (305 mm) of cover.

8

Feed and pull blades available for installing cable, pipe and other material.

3

Installs power and communications lines up to 0.88 inches (22 mm) in diameter and natural gas, water service and sprinkler systems up to 0.75 inches (19 mm) in diameter.

4

Compact size allows access through a standard yard gate.

5

Self-propelled design for better maneuverability.



The **Ditch Witch® 100SX** does more than stand its ground against the competition. Its high-flotation tires give you the traction you need without manhandling the turf, and its quiet Honda® engine gives you the necessary power without assaulting your ears. With the 100SX, noise and vibration stay where they belong—below the surface.

WE'RE IN THIS TOGETHER.



100SX VIBRATORY PLOW SPECIFICATIONS

	U.S.	METRIC
DIMENSIONS		
Height, min/max	40 in	1.02 m
Length, min	67 in	1.7 m
Width		
Max	35 in	889 mm
Min	32.5 in	825.5 mm
Ground clearance, max	4.1 in	104 mm
Plow cover depth, max	12 in	305 mm
Basic unit weight	720 lb	326 kg
OPERATION		
Ground drive speed, max		
Forward/reverse	92 fpm	28 m/min
Material installation diameter, max		
Pull blade	0.88 in	22 mm
Feed blade	0.5 in	13 mm
Material bend radius, max/min		
Feed blade	1 in	25 mm
Plow blade width		
Max	0.77 in	20 mm
Min	0.38 in	10 mm
Plow blade depth		
Max	12 in	305 mm
Min	6 in	152 mm

Dimensions are dependent on plow blade size, tire size and selection of trencher options.

Specifications are general and subject to change without notice. If exact measurements are required, equipment should be weighed and measured. Due to selected options, delivered equipment may not necessarily match that shown.

	U.S.	METRIC
POWER		
Engine	Honda® GX340	
Fuel	Gasoline	
Cooling medium	Air	
Aspiration	Natural	
Number of cylinders	1	
Displacement	20.6 in³	2.3 L
Bore	3.23 in	82 mm
Stroke	2.52 in	64 mm
Rated speed	3,600 rpm	
Manufacturer's gross power rating (per SAE J1940)	11 hp	8.2 kW
Drive type		
Ground	Hydrostatic	
Plow	Belt w/hand clutch	
Tires		
Max	18 x 11-8	
Min	16 x 6.5-8	
HYDRAULIC SYSTEM		
Ground drive		
Pressure	2,500 psi	172 bar
Flow rate	2.2 gpm	8.3 l/min
FLUID CAPACITIES		
Fuel tank	1.7 gal	6.5 L
Hydraulic reservoir	3.5 gal	13.2 L

RT45 TRACTOR

1

User-friendly operation, with color-coded speed/direction and attachment controls easily accessible by operator; backfill blade controlled by a highly responsive joystick.

2

Advanced operator presence system designed to promote safety by stopping the engine when operator leaves the seat.

3

Operator's station features one-piece molded instrument console designed to provide ample legroom and greater visibility.

10

Direct-coupled, high-torque digging chain motor designed for increased production and reliability.

9

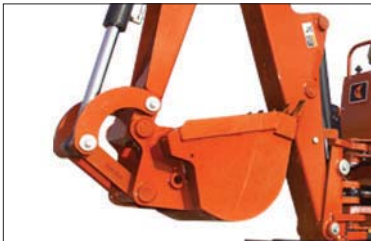
Easy-to-use foot pedal that controls infinitely variable ground drive forward and reverse.

8

Heavy-duty engine mount for high-vibration applications.



RT45 TRACTOR ATTACHMENTS



U.S. METRIC

H331 VIBRATORY PLOW

DIMENSIONS		
Angle of departure	22°	
Cover depth, feed blade, max	24 in	610 mm
Transport length, plow w/blade	169 in	4.3 m
Offers both feed and pull blades. Maximum cover depth (feed blade) of 24 in (610 mm).		

H350 TRENCHER/PLOW COMBO

DIMENSIONS*		
Angle of departure	33°	
Trench depth, max	42 in	1.1 m
Trench width, min to max	6-8 in	150-200 mm

PLOW DIMENSIONS		
Angle of departure, transport, 18-in (457-mm) blade	17°	
Cover depth	24 in	610 mm

GENERAL		
Operating weight, w/out augers, boom, chain, and plow blade	1,500 lb	680 kg
* Dimensions are based on shortest roller boom, 26 x 12-12 standard tire and wheel, and 12-in (305-mm) pivot.		
Trenches up to 42 in (1.07 m) deep and 8 in (200 mm) wide. Plows to a cover depth of 24 in (610 mm).		

H313 TRENCHER

DIMENSIONS*		
Angle of departure	17°	
Trench depth, max	63 in	1.6 m
Trench width, min to max	6-12 in	150-305 mm
Attachment weight	610 lb	277 kg
* Dimensions are based on shortest roller boom, 26 x 12-12 standard tire and wheel and 12-in (305-mm) pivot.		

A centerline trencher w/a maximum trench depth of 63 in (1.6 m).

H314 TRENCHER

DIMENSIONS*		
Angle of departure	35°	
Trench depth, max	52 in	1.3 m
Trench width, min to max		
Center	6-12 in	150-305 mm
Offset	6-8 in	150-200 mm
Attachment weight	570 lb	260 kg

* Dimensions are based on shortest roller boom, 26 x 12.00-12 standard tire and wheel, and 12-in (305-mm) pivot.

H342 SAW

DIMENSIONS		
Angle of departure	14°	
Trench depth, max	18 in	455 mm
Overall length, transport	162 in	4.1 m
Number of teeth on saw wheel	36	
Attachment weight		
2.5-in (65-mm) segments	1,550 lb	700 kg
3.5-in (90-mm) segments	1,610 lb	730 kg
5-in (130-mm) segments	1,660 lb	755 kg

Offers 18-in (455-mm) digging depth, w/optional widths of 2.5 to 5 in (63.5 to 127 mm).

A322 BACKHOE

DIMENSIONS		
Backhoe length, stowed	60 in	1.5 m
Digging depth, max	72 in	1.8 m
Reach from swing pivot	102 in	2.6 m

GENERAL		
Bucket width	12 in	305 mm
Bucket capacity	1.1 ft³	0.03 m³
Backhoe weight w/bucket	1,125 lb	511 kg
Swing arc	160°	
Features a remote blade lift and throttle. Maximum digging depth of 72 in (1.83 m).		

MT12 MICROTRENCHER

DIMENSIONS, w/31 x 10 solid tires		
Angle of departure	19°	
Trench depth 1-ft (25.4-mm) increments	6.5-12.5 in	165-318 mm
Blade diameter	34 in	864 mm
Trench width	0.75-1.5 in	19-38 mm
Attachment weight (includes mount kit)	1,400 lb	636 kg

RT100 TRACTOR



1

The versatile RT100 accepts two types of trencher attachments—centerline and offset—plus a front-mounted backhoe.

2

An optional cab keeps you working through inclement weather.

3

Color LCD display provides all engine information and diagnostics.

4

Powershift transmission gives you on-the-go shifting and no clutching.

5

99-hp (74-kW) Deutz® diesel engine is Tier 3 or Tier 4i compliant.

11

Mechanical power design delivers the industry's most efficient transfer of power to the digging attachment.

10

Ergonomically designed operator's station includes a 90-degree swivel seat, adjustable armrests, easy-to-read gauges, and a tiltable steering column.

9

Molded hydraulic tank and fuel tanks make more efficient use of available space and are enclosed in a steel cradle.

RT100 TRACTOR SPECIFICATIONS

	U.S.	METRIC
DIMENSIONS		
Height (H1)	115 in	2.92 m
Length, nose to rear mount (L1)	125 in	3.2 m
Length, transport (L2)	154 in	3.91 m
Wheelbase (L4)	79 in	2 m
Width (W2)	82 in	2.1 m
Angle of approach (A2)	23°	
Tread (W4)	64 in	1.63 m

POWER (TIER 3) (LRC)		
Engine	Deutz® TCD 3.6 L4	
Fuel	Diesel	
Cooling medium	Liquid	
Injection	Direct	
Aspiration	Turbocharged, charge air cooled	
Number of cylinders	4	
Displacement	221 in³	3.6 L
Bore	3.86 in	98 mm
Stroke	4.72 in	120 mm
Manufacturer's gross power rating (SAE J1995)	99 hp	74 kW
Rated speed	2,300 rpm	
Emissions compliance	EPA Tier 3	EU Stage IIIA

POWER (TIER 4i)		
Engine	Deutz TCD 3.6 L4	
Fuel	Diesel	
Cooling medium	Liquid	
Injection	Direct	
Aspiration	Turbocharged, charge air cooled	
Number of cylinders	4	
Displacement	221 in³	3.6 L
Bore	3.86 in	98 mm
Stroke	4.72 in	120 mm
Manufacturer's gross power rating (SAE J1995)	99 hp	74 kW
Rated speed	2,300 rpm	
Emissions compliance	EPA Tier 4i	EU Stage IIIB

POWER TRAIN		
Ground drive transmission	Powershift (driving), hydrostatic (digging)	
Differentials	Planetary front and rear w/optional rear steering	
Parking brake	Disc, hand operated	
Attachment drive transmission	Powershift, lever-operated speed infinitely variable from zero to maximum forward with limited stroke reverse	

	U.S.	METRIC
OPERATION		
Forward speed		
Low/low	0.44 mph	0.71 km/h
Low	6.2 mph	9.97 km/h
High	9.2 mph	14.8 km/h
Reverse speed		
Low/low	0.44 mph	0.71 km/h
Low	6 mph	9.65 km/h
High	9 mph	14.48 km/h
Vehicle clearance circle (SAE) wall to wall w/backfill blade		
Front steer only	35 ft	11 m
Front and rear steer	21 ft	6 m
Ground clearance	14 in	355 mm
Basic unit weight	8,880 lb	4028 kg
Allowable tractor weight, max	19,300 lb	8754 kg
Front counterweight	1,300 lb	590 kg

HYDRAULIC SYSTEM @ 2,300 RPM		
Ground drive pump capacity	9.7 gpm	36.7 l/min
Ground drive pump relief pressure	4,300 psi	296 bar
Auxiliary pump capacity	13.6 gpm	51.5 l/min
Auxiliary pump relief pressure	2,500 psi	172 bar

FLUID CAPACITIES		
Fuel tank	38 gal	114 L
Engine oil	8.5 qt	8 L
Hydraulic reservoir	24 gal	91 L
Hydraulic system	29 gal	110 L

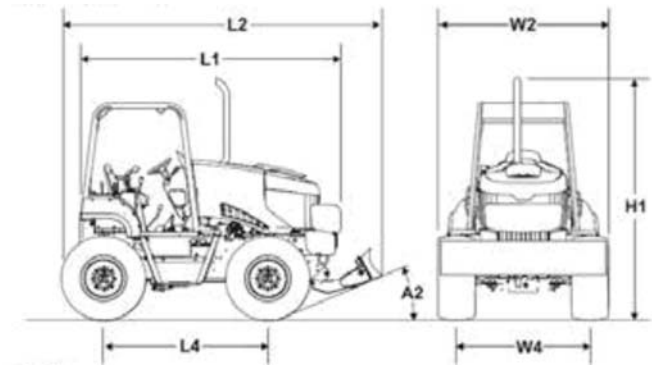
NOISE LEVEL		
Sound pressure	91 dBA	
Sound power	109 dBA	

BACKFILL BLADE		
Blade width	80 in	2 m
Blade height	17 in	432 mm
Lift height above ground	19 in	483 mm
Blade drop below ground	13 in	330 mm
Swing angle, max, left/right	30°	
Tilt angle, up/down	12°	

TIRES		
30 x 18-20 14-ply bar lug flotation	72 psi	5 bar

BATTERY		
Group	34H	
SAE reserve capacity rating	120 min	

Specifications are general and subject to change without notice. If exact measurements are required, equipment should be weighed and measured. Due to selected options, delivered equipment may not necessarily match that shown.



RT80 RIDE-ON TRENCHER



KEY FEATURES/BENEFITS

TURBOCHARGED DEUTZ®, TIER 4 DIESEL ENGINE

with 74 gross hp (55.4 kW) utilizes only a simple after-treatment and offers low operational cost over machine life.

VERSATILE MID-SIZE MACHINE for heavy-duty trenching and vibratory plowing; backhoe and reel carrier attachments also available.

TREMENDOUS AXLE CAPACITY for a best-in-class static load rating of 39,000 lb (17,690 kg).

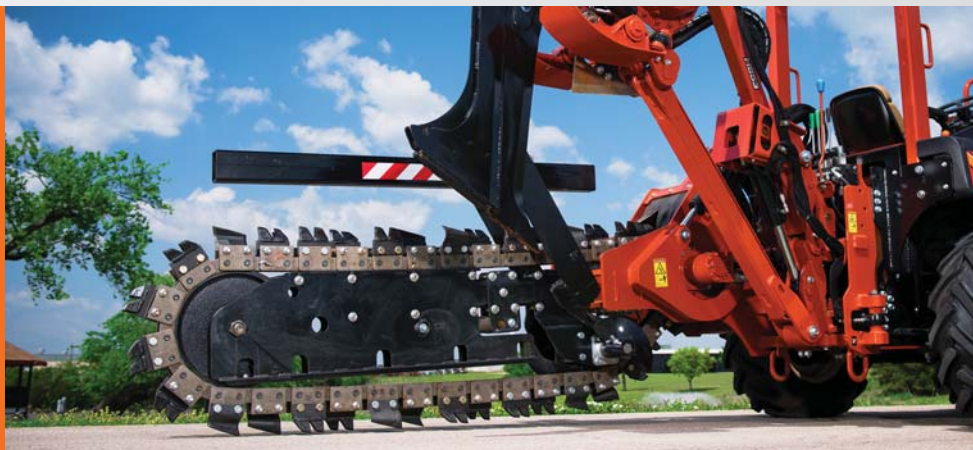
SHIFT-ON-THE-FLY GROUND DRIVE—three speeds in forward, three in reverse—provides the power you need, when you need it, to tackle any jobsite.

ADVANCED CRUISE-CONTROL SYSTEM senses engine load and automatically adjusts ground drive speed to changing soil conditions, for maximum production.

NEW COLOR LCD ENGINE DISPLAY provides all engine information and diagnostics.

INTRODUCING THE NEW

RT80



RT80 TRACTOR SPECIFICATIONS

	U.S.	METRIC
DIMENSIONS		
Height	108.5 in	2756 mm
Length, transport	139 in	3530 mm
Wheelbase	63 in	1600 mm
Width	71.5 in	1816 mm
Angle of approach	29.2°	
Tread	60 in	1524 mm
Rear axle to attachment mount holes	16.8 in	427 mm

POWER PLANT		
Engine	Deutz® TD3.6 L4	
Fuel	Diesel	
Cooling medium	Liquid	
Injection	Direct	
Aspiration	Turbocharged	
Number of cylinders	4	
Displacement	221 in ³	3.6 L
Bore	3.86 in	98 mm
Stroke	4.72 in	120 mm
Engine manufacturer's gross power rating (SAE J1995)	74 hp	55.4 kW
Rated speed	2,500 rpm	
Emissions compliance	EPA Tier 4	EU Stage IIIB

POWER TRAIN		
Ground drive transmission	Hydrostatic	
Differentials	Planetary front and rear w/standard rear steering	
Parking brake	Manual lever disc brake	
Tires		
355 x 55 - 625, 14 ply	75 psi	517 kPa
355 x 55 - 625, 14 ply (urethane)	N/A	N/A
31 x 10 (solid)	N/A	N/A
Attachment drive transmission	Hydrostatic, electric rotary knob, speed infinitely variable from zero to maximum	

OPERATION		
Forward speed		
Low	1.82 mph	2.93 km/h
Medium	3.68 mph	5.92 km/h
High	6.77 mph	10.9 km/h
Reverse speed		
Low	1.77 mph	2.85 km/h
Medium	3.17 mph	5.1 km/h
High	3.36 mph	5.41 km/h
Vehicle clearance circle (SAE) wall to wall w/backfill blade		
Front steer only	32 ft	9.75 m
Front and rear steer	20.8 ft	6.34 m
Ground clearance	12 in	305 mm
Basic unit weight	7,655 lb	3835 kg
Allowable tractor weight, max, 2 post/4 post	19,100 lb	8864 kg
Front counterweight (optional)	1,650 lb	750 kg

HYDRAULIC SYSTEM @ 2,500 RPM		
Ground drive pump capacity	35 gpm	132 l/min
Ground drive pump relief pressure	6,000 psi (gauge)	414 bar (gauge)
Attachment pump capacity, (2500 rpm)	30 gpm	114 l/min
Attachment pump relief pressure, (2500 rpm)		
Forward/reverse	5,500 psi	380 bar
Auxiliary pump capacity		
Front pump (steering)	7.1 gpm	27 l/min
Rear pump (auxiliary)	6.2 gpm	23 l/min
Auxiliary pump relief pressure, (2500 rpm)	3,000 psi	207 bar

FLUID CAPACITIES		
Fuel tank	30 gal	114 L
Engine oil	8.4 qt	8 L
Hydraulic reservoir	12 gal	45 L
Hydraulic system	19 gal	72 L
Coolant	3 gal	11.4 L

NOISE LEVEL		
Operator	92 dBA sound pressure per ISO 6394	
Exterior	107 dBA sound power per ISO 6394	

BACKFILL BLADE		
Blade width	72 in	1829 mm
Blade height	14 in	355 mm
Lift height above ground	25.2 in	640 mm
Blade drop below ground	10.9 in	276 mm
Swing angle, max		
Left/right	30°	
Tilt angle		
Up/down	16°	

VIBRATION LEVEL (WHILE PLOWING)		
Hand/arm	7.56 m/sec ³	
Feet/seat	1.61 m/sec ³	

BATTERY		
Group	78U	
SAE reserve capacity rating	110 min	
SAE cold crank @ 0°F (-18°C)	800 amps	
Auxiliary power outlet	12V, 10 amps	

Specifications are general and subject to change without notice. If exact measurements are required, equipment should be weighed and measured. Due to selected options, delivered equipment may not necessarily match that shown.



RT55 TRACTOR

1

Integrated front cast weight reduces the need for extended weight racks, no matter which attachment is used.

3

Operator's station features easy-to-read gauge cluster, 90-degree swivel seat, sloped hood design, and optional cruise control system.

2

Quiet, emissions-compliant Deutz® engine is built for maximum power and minimal maintenance.

6

Two-piece hood design allows easy access to engine compartment for service and daily maintenance.

5

Planetary axles provide greater torque at the wheel and higher ground clearance.



RT55 TRACTOR ATTACHMENTS



	U.S.	METRIC
H533 VIBRATORY PLOW		
DIMENSIONS		
Angle of departure, transport, 24-in (610-mm) blade	23°	
Attachment length, plow in stow lock, no blade	62 in	1.57 m
Cover depth*	30 in	762 mm
Attachment weight, w/out plow blade	1355 lb	615 kg
H516 TRENCHER		
DIMENSIONS		
Angle of departure	25°	
Trench depth, max	62 in	1.57 m
Trench width, min to max	6-12 in	150-305 mm
Transport length	102 in	2.6 m
Attachment weight w/4-ft (1.2-m) roller boom & 70-k chain	1,950 lb	885 kg
H540 SAW		
DIMENSIONS		
Angle of departure	20°	
Trench depth, max	26 in	660 mm
Overall length, transport	214 in	5.44 m
Number of teeth		
5-in (130-mm) width	39	
6-in (150-mm) width	45	
7-in (180-mm) width	51	
Attachment weight	2,620 lb	1188 kg
A523 BACKHOE		
DIMENSIONS		
Backhoe length, stowed	57.2 in	1.45 m
Digging depth, max	94.5 in	2.4 m
Reach from swing pivot	142.2 in	3.61 m
GENERAL		
Bucket width	12-18 in	305-460 mm
Backhoe weight w/bucket	2,150 lb	975 kg
Swing arc	170°	
RC55 REEL CARRIER		
DIMENSIONS		
Reel diameter, max	60 in	1.52 m
Internal width	46 in	1.17 m
Capacity	1,500 lb	680 kg
Attachment weight	600 lb	270 kg
H553 TRENCHER/PLOW COMBO		
DIMENSIONS		
Angle of departure	25°	
Trench width	6-12 in	150-305 mm
Transport length	102 in	2.6 m
Attachment length	102 in	2.6 m
Cover depth*	30 in	762 mm
GENERAL		
Operating weight w/out boom, chain or plow blade	2,159 lb	960 kg
MT12 MICROTRENCHER		
DIMENSIONS, WITH 31 X 10 SOLID TIRES		
Angle of departure	19°	
Trench depth 1-ft (25.4-mm) increments	6.5-12.5 in	165-318 mm
Trench width	0.75-1.5 in	19-38 mm
Blade diameter	34 in	864 mm
Attachment weight (includes mount kit)	1,480 lb	673 kg

* Suggested maximum. Plow blade used will be determined by job requirements and soil conditions.



Архангельск (8182)63-90-72
Астана +7(7172)727-132
Белгород (4722)40-23-64
Брянск (4832)59-03-52
Владивосток (423)249-28-31
Волгоград (844)278-03-48
Вологда (8172)26-41-59
Воронеж (473)204-51-73
Екатеринбург (343)384-55-89
Иваново (4932)77-34-06
Ижевск (3412)26-03-58
Казань (843)206-01-48

Калининград (4012)72-03-81
Калуга (4842)92-23-67
Кемерово (3842)65-04-62
Киров (8332)68-02-04
Краснодар (861)203-40-90
Красноярск (391)204-63-61
Курск (4712)77-13-04
Липецк (4742)52-20-81
Магнитогорск (3519)55-03-13
Москва (495)268-04-70
Мурманск (8152)59-64-93
Набережные Челны (8552)20-53-41

Нижний Новгород (831)429-08-12
Новокузнецк (3843)20-46-81
Новосибирск (383)227-86-73
Орел (4862)44-53-42
Оренбург (3532)37-68-04
Пенза (8412)22-31-16
Пермь (342)205-81-47
Ростов-на-Дону (863)308-18-15
Рязань (4912)46-61-64
Самара (846)206-03-16
Санкт-Петербург (812)309-46-40
Саратов (845)249-38-78

Смоленск (4812)29-41-54
Сочи (862)225-72-31
Ставрополь (8652)20-65-13
Тверь (4822)63-31-35
Томск (3822)98-41-53
Тула (4872)74-02-29
Тюмень (3452)66-21-18
Ульяновск (8422)24-23-59
Уфа (347)229-48-12
Челябинск (351)202-03-61
Череповец (8202)49-02-64
Ярославль (4852)69-52-93

сайт: <http://www.ditch.nt-rt.ru/> || эл. почта: dhc@nt-rt.ru